



Casing

Description	Length	Part#	Weight (Lb)
AW	1'	12-AWFJC-1	4
AW	2'	12-AWFJC-2	7
AW	3'	12-AWFJC-3	11
AW	5'	12-AWFJC-5	19
AW	10'	12-AWFJC-10	37
BW	1'	12-BWFJC-1	7
BW	2'	12-BWFJC-2	15
BW	3'	12-BWFJC-3	22
BW	5'	12-BWFJC-5	35
BW	10'	12-BWFJC-10	71
NW	1'	12-NWFJC-1	9
NW	2'	12-NWFJC-2	18
NW	3'	12-NWFJC-3	27
NW	5'	12-NWFJC-5	43
NW	10'	12-NWFJC-10	85
HW	1'	12-HWFJC-1	12
HW	2'	12-HWFJC-2	24
HW	3'	12-HWFJC-3	37
HW	5'	12-HWFJC-5	60
HW	10'	12-HWFJC-10	118
PW	1'	12-PWFJC-1	14
PW	2'	12-PWFJC-2	29
PW	3'	12-PWFJC-3	44
PW	5'	12-PWFJC-5	70
PW	10'	12-PWFJC-10	144
SW	1'	12-SWFJC-1	21
SW	2'	12-SWFJC-2	42
SW	3'	12-SWFJC-3	63
SW	5'	12-SWFJC-5	100
SW	10'	12-SWFJC-10	201

** Also available with L.H. threading.*

** Also available in 1026.*

** Please consult factory for special requirements.*



W FLUSH JOINT CASING (METRIC)

N&N Drilling Supply Mfr. • (800) 334-4927



Casing

Description	Length	Part#	Weight (Lb)
AW	0.75M	12-AWFJC-0.75M	7
AW	1.50M	12-AWFJC-1.50M	18
AW	3.00M	12-AWFJC-3.00M	36
BW	0.75M	12-BWFJC-0.75M	14
BW	1.50M	12-BWFJC-1.50M	34
BW	3.00M	12-BWFJC-3.00M	70
NW	0.75M	12-NWFJC-0.75M	17
NW	1.50M	12-NWFJC-1.50M	42
NW	3.00M	12-NWFJC-3.00M	85
HW	0.75M	12-HWFJC-0.75M	23
HW	1.50M	12-HWFJC-1.50M	58
HW	3.00M	12-HWFJC-3.00M	117
PW	0.75M	12-PWFJC-0.75M	28
PW	1.50M	12-PWFJC-1.50M	69
PW	3.00M	12-PWFJC-3.00M	142
SW	0.75M	12-SWFJC-0.75M	41
SW	1.50M	12-SWFJC-1.50M	99
SW	3.00M	12-SWFJC-3.00M	200

** Also available with L.H. threading.*

** Also available in 1026.*

** Please consult factory for special requirements.*



Casing

Description	Length	Part#	Weight (Lb)
BWT	1'	12-BWTFJC-1	7
BWT	2'	12-BWTFJC-2	15
BWT	3'	12-BWTFJC-3	22
BWT	5'	12-BWTFJC-5	36
BWT	10'	12-BWTFJC-10	71
NWT	1'	12-NWTFJC-1	9
NWT	2'	12-NWTFJC-2	18
NWT	3'	12-NWTFJC-3	27
NWT	5'	12-NWTFJC-5	43
NWT	10'	12-NWTFJC-10	85
HWT	1'	12-HWTFJC-1	12
HWT	2'	12-HWTFJC-2	24
HWT	3'	12-HWTFJC-3	37
HWT	5'	12-HWTFJC-5	60
HWT	10'	12-HWTFJC-10	118
PWT	1'	12-PWTFJC-1	16
PWT	2'	12-PWTFJC-2	33
PWT	3'	12-PWTFJC-3	49
PWT	5'	12-PWTFJC-5	81
PWT	10'	12-PWTFJC-10	144
SWT	1'	12-SWTFJC-1	21
SWT	2'	12-SWTFJC-2	42
SWT	3'	12-SWTFJC-3	63
SWT	5'	12-SWTFJC-5	100
SWT	10'	12-SWTFJC-10	201

** Also available with L.H. threading.*

** Also available in 1026.*

** Please consult factory for special requirements.*



WT FLUSH JOINT CASING (METRIC)

N&N Drilling Supply Mfr. • (800) 334-4927



Casing

Description	Length	Part#	Weight (Lb)
BWT	0.75M	12-BWTFJC-0.75M	14
BWT	1.50M	12-BWTFJC-1.50M	35
BWT	3.00M	12-BWTFJC-3.00M	70
NWT	0.75M	12-NWTFJC-0.75M	17
NWT	1.50M	12-NWTFJC-1.50M	42
NWT	3.00M	12-NWTFJC-3.00M	84
HWT	0.75M	12-HWTFJC-0.75M	23
HWT	1.50M	12-HWTFJC-1.50M	59
HWT	3.00M	12-HWTFJC-3.00M	117
PWT	0.75M	12-PWTFJC-0.75M	32
PWT	1.50M	12-PWTFJC-1.50M	80
PWT	3.00M	12-PWTFJC-3.00M	142
SWT	0.75M	12-SWTFJC-0.75M	41
SWT	1.50M	12-SWTFJC-1.50M	99
SWT	3.00M	12-SWTFJC-3.00M	200

** Also available with L.H. threading.*

** Also available in 1026.*

** Please consult factory for special requirements.*



Drive Shoe

HEAT TREATED DRIVE SHOES

Description	Part#	Weight (Lb)
AW	16-AWDS	2
BW	16-BWDS	3
BWT	16-BWTDS	3
NW	16-NWDS	4
NWT	16-NWTDS	4
HW	16-HWDS	7
HWT	16-HWTDS	7
PW	16-PWDS	15
PWT	16-PWTDS	15
SW	16-SWDS	20
SWT	16-SWTDS	20

** Also available with L.H. threading.*

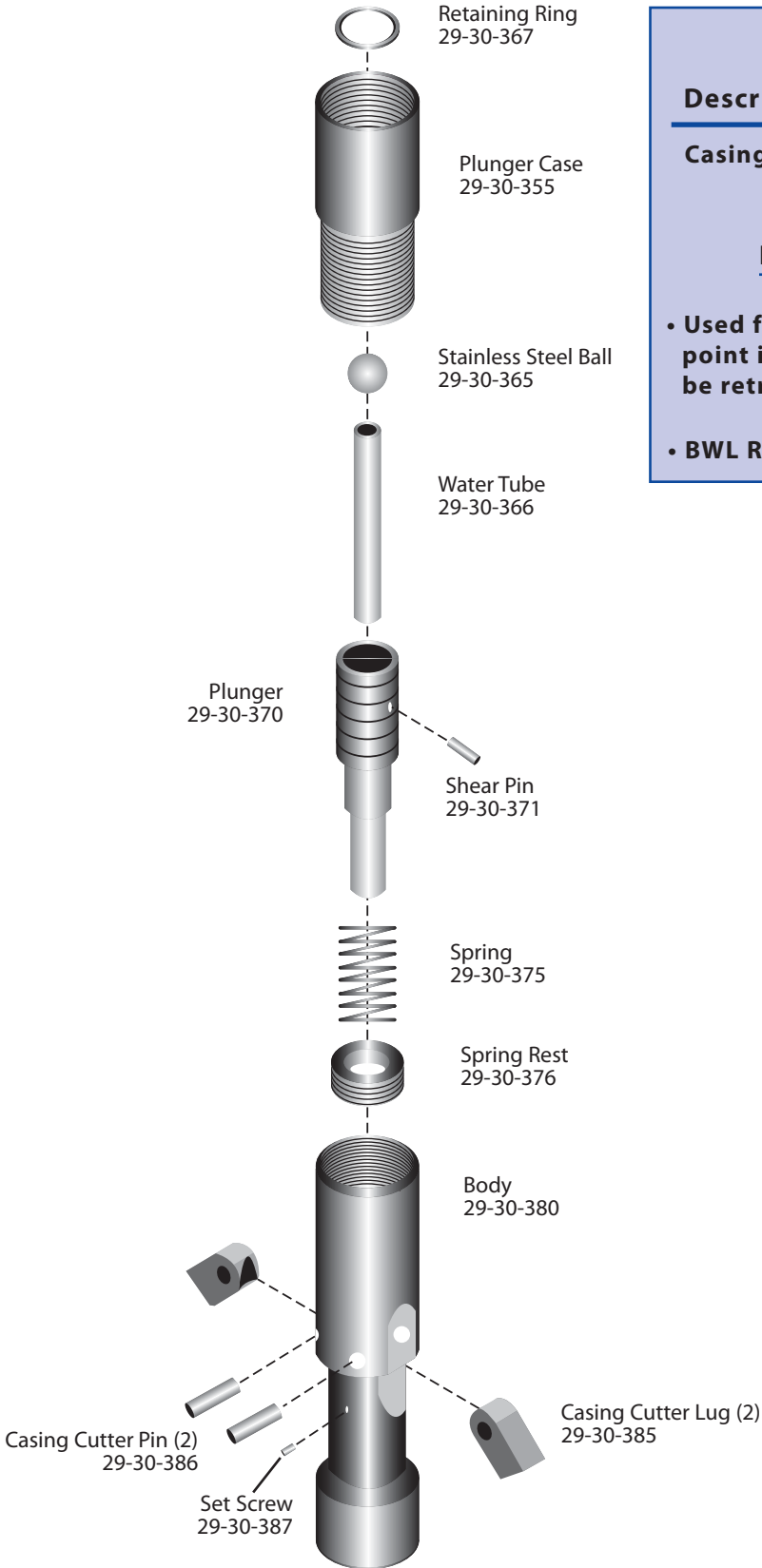


Steel Casing Cap

STEEL CASING CAPS

Description	Part#	Weight (Lb)
AW	16-AWCP	3
BW	16-BWCP	5
BWT	16-BWTCP	5
NW	16-NWCP	6
NWT	16-NWTCP	6
HW	16-HWCP	8
HWT	16-HWTCP	8
PW	16-PWCP	10
PWT	16-PWTCP	10
SW	16-SWCP	15
SWT	16-SWTCP	15

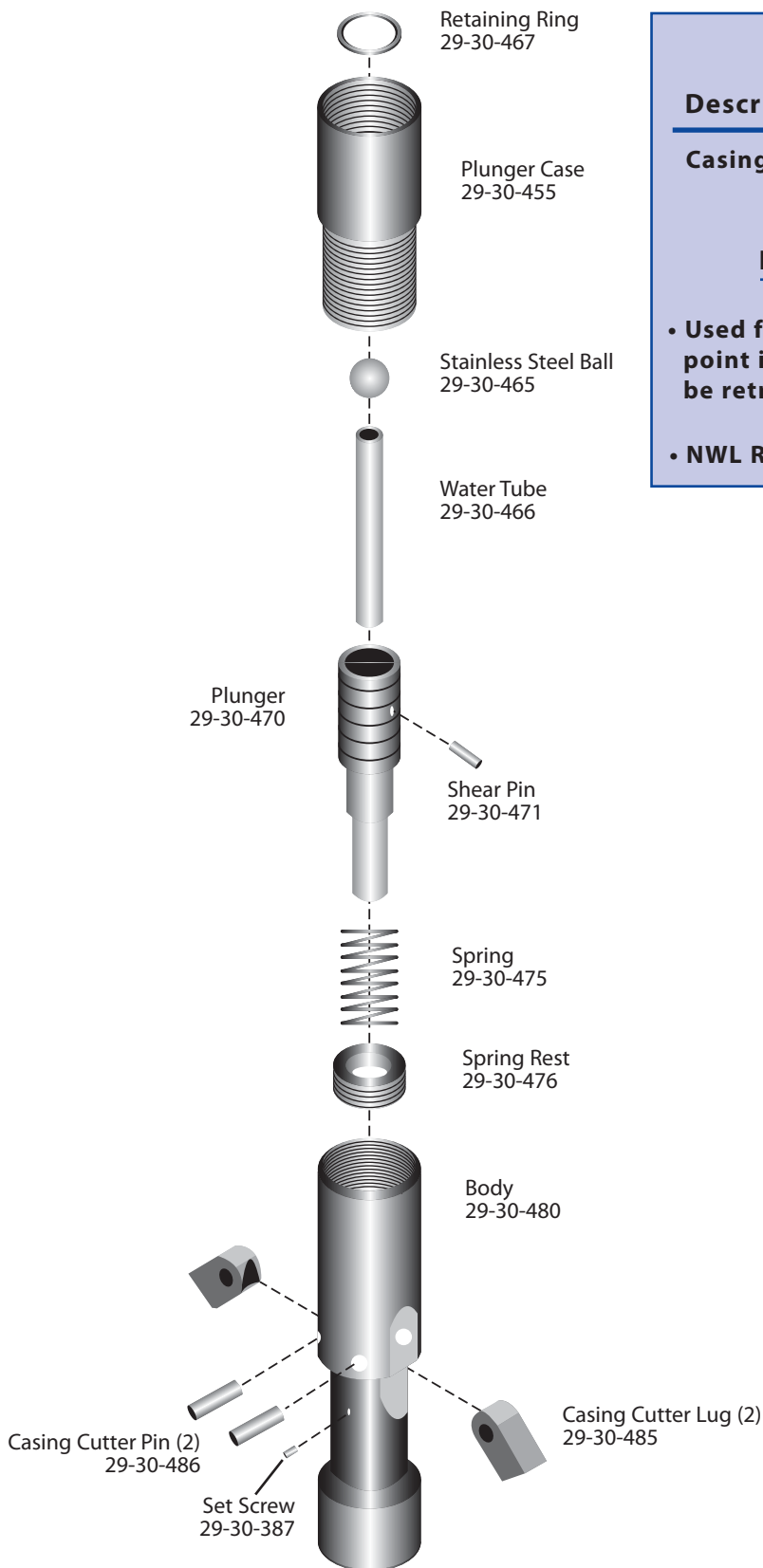
** Also available with L.H. threading.*



<u>ASSEMBLY</u>		
<u>Description</u>	<u>Part#</u>	<u>Weight (Lb)</u>
Casing Cutter Assy	29-30-350	17

BW CASING CUTTER APPLICATIONS

- Used for cutting BW Casing or NWL Rod at any point in a drill hole when the entire string cannot be retrieved.
- BWL Rod Box Connection



<u>ASSEMBLY</u>		
<u>Description</u>	<u>Part#</u>	<u>Weight (Lb)</u>
Casing Cutter Assy	29-30-450	25

NW CASING CUTTER APPLICATIONS

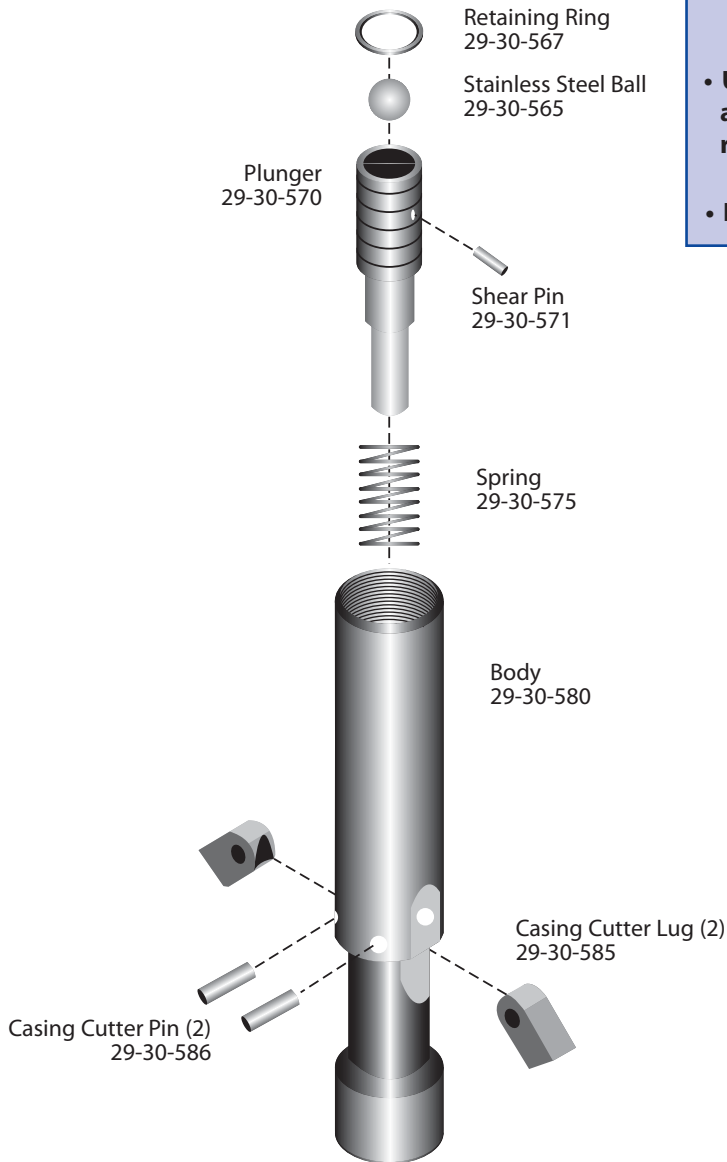
- Used for cutting NW Casing or HWL Rod at any point in a drill hole when the entire string cannot be retrieved.
- NWL Rod Box Connection



<u>ASSEMBLY</u>		
<u>Description</u>	<u>Part#</u>	<u>Weight (Lb)</u>
Casing Cutter Assy	29-30-550	38

HW CASING CUTTER APPLICATIONS

- Used for cutting HW / HWT Casing at any point in a drill hole when the entire string cannot be retrieved.
- HWL Rod Box Connection

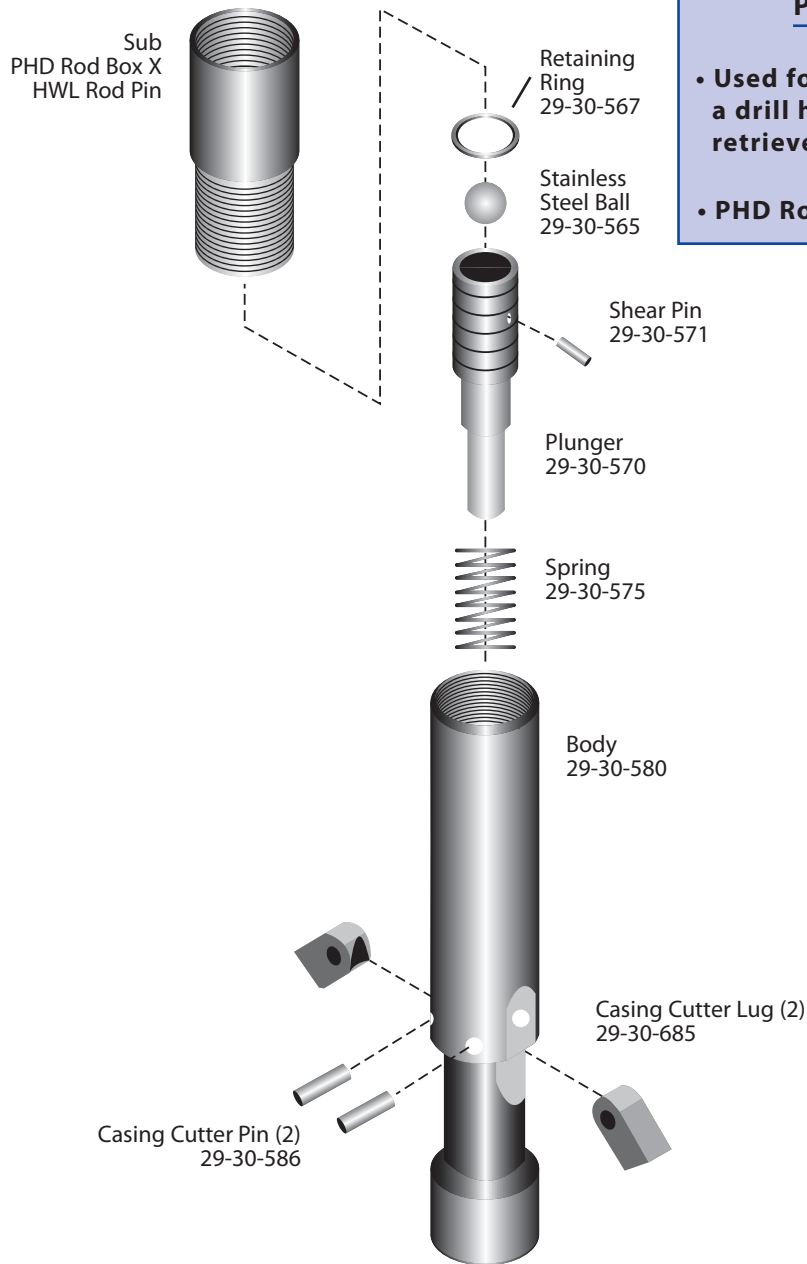




<u>ASSEMBLY</u>		
<u>Description</u>	<u>Part#</u>	<u>Weight (Lb)</u>
Casing Cutter Assy	29-30-650	41

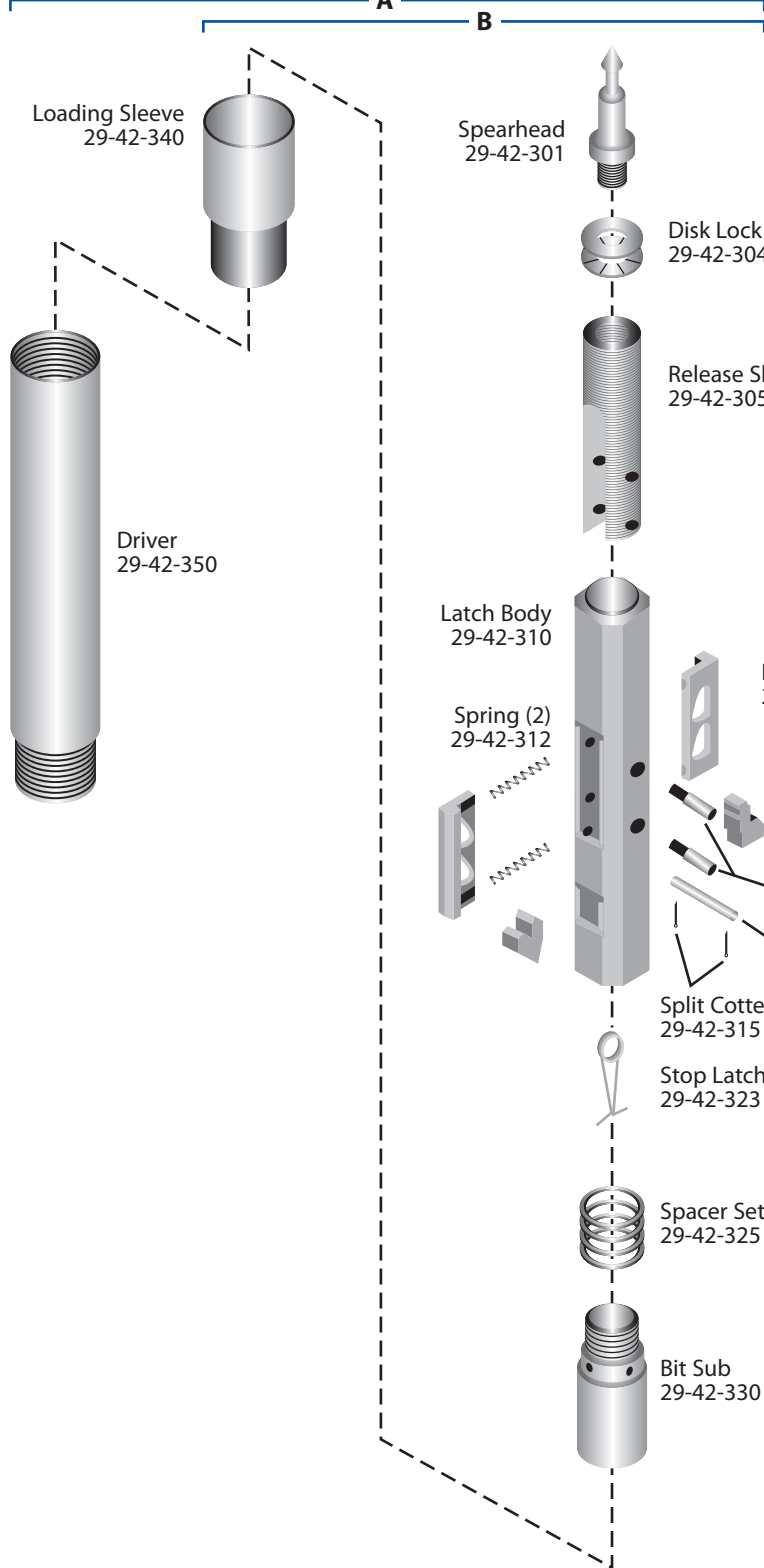
PW CASING CUTTER APPLICATIONS

- Used for cutting PW / PWT Casing at any point in a drill hole when the entire string cannot be retrieved.
- PHD Rod Box Connection





Assemblies

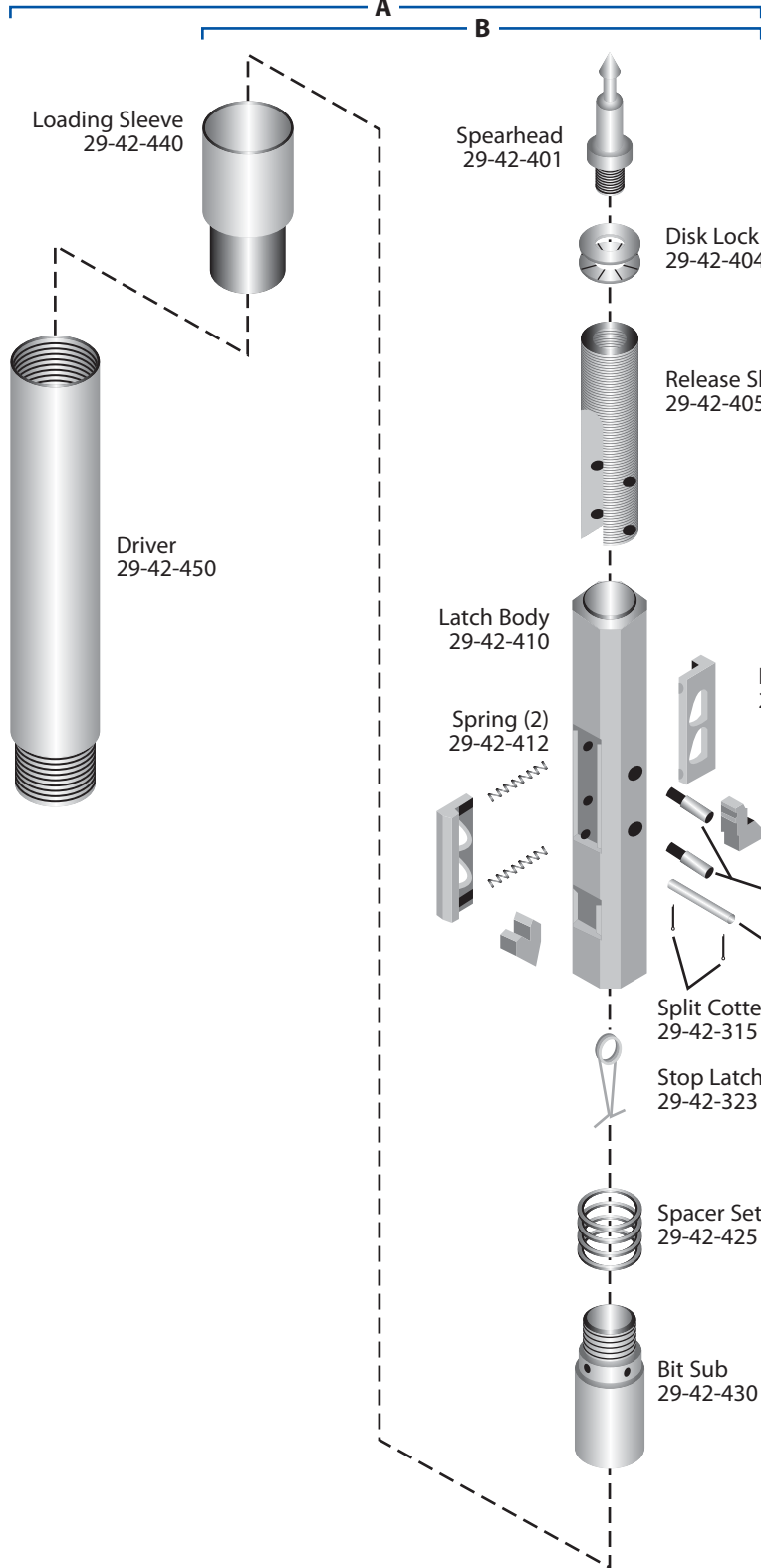


<u>ASSEMBLIES</u>		
<u>Group</u>	<u>Description</u>	<u>Part#</u>
A	Casing Advancer Assy	29-40-305
B	Inner Assy	29-41-305

** Please consult factory for special requirements.*



Assemblies

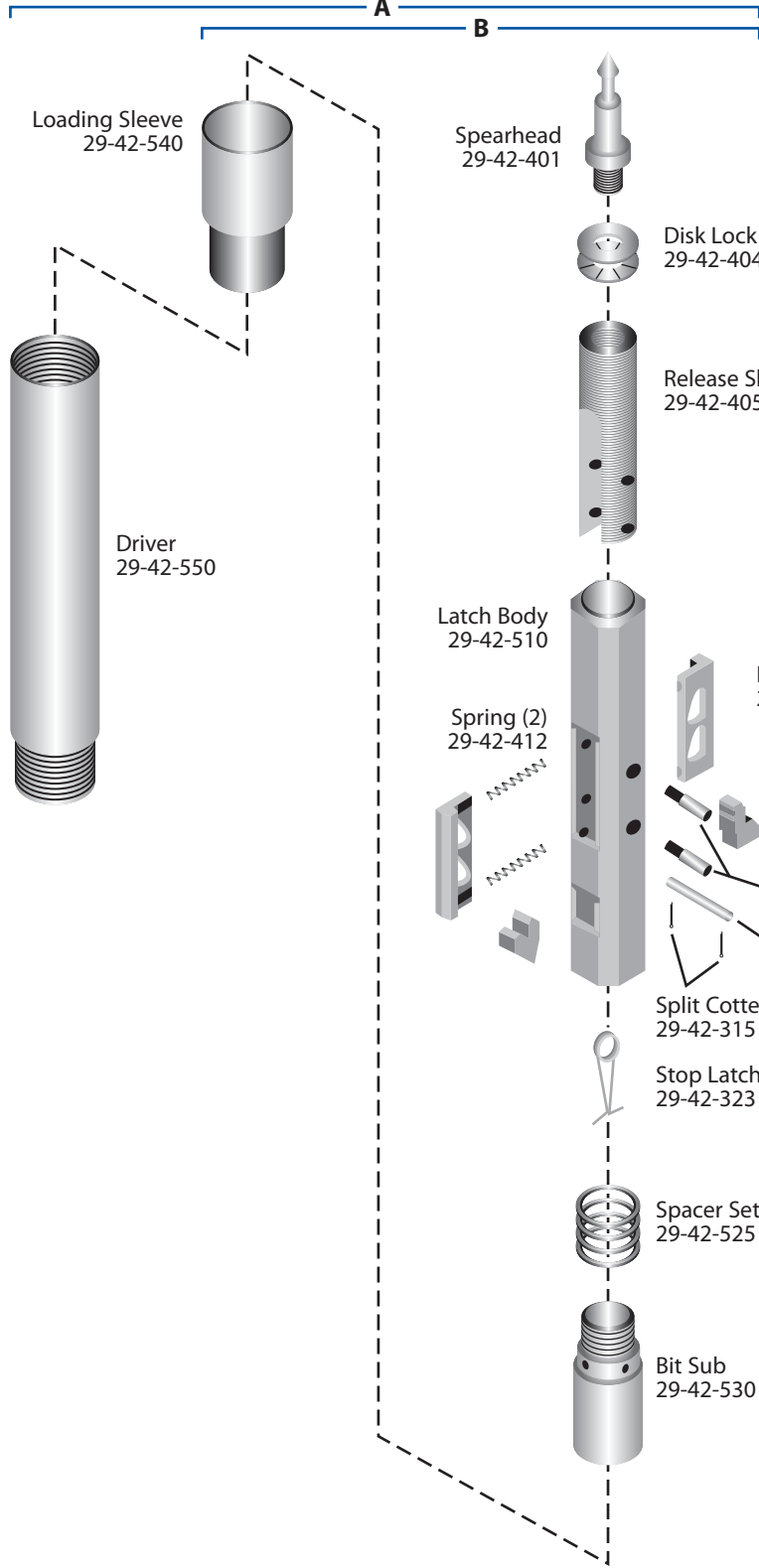


ASSEMBLIES		
Group	Description	Part#
A	Casing Advancer Assy	29-40-405
B	Inner Assy	29-41-405

* Please consult factory for special requirements.



Assemblies

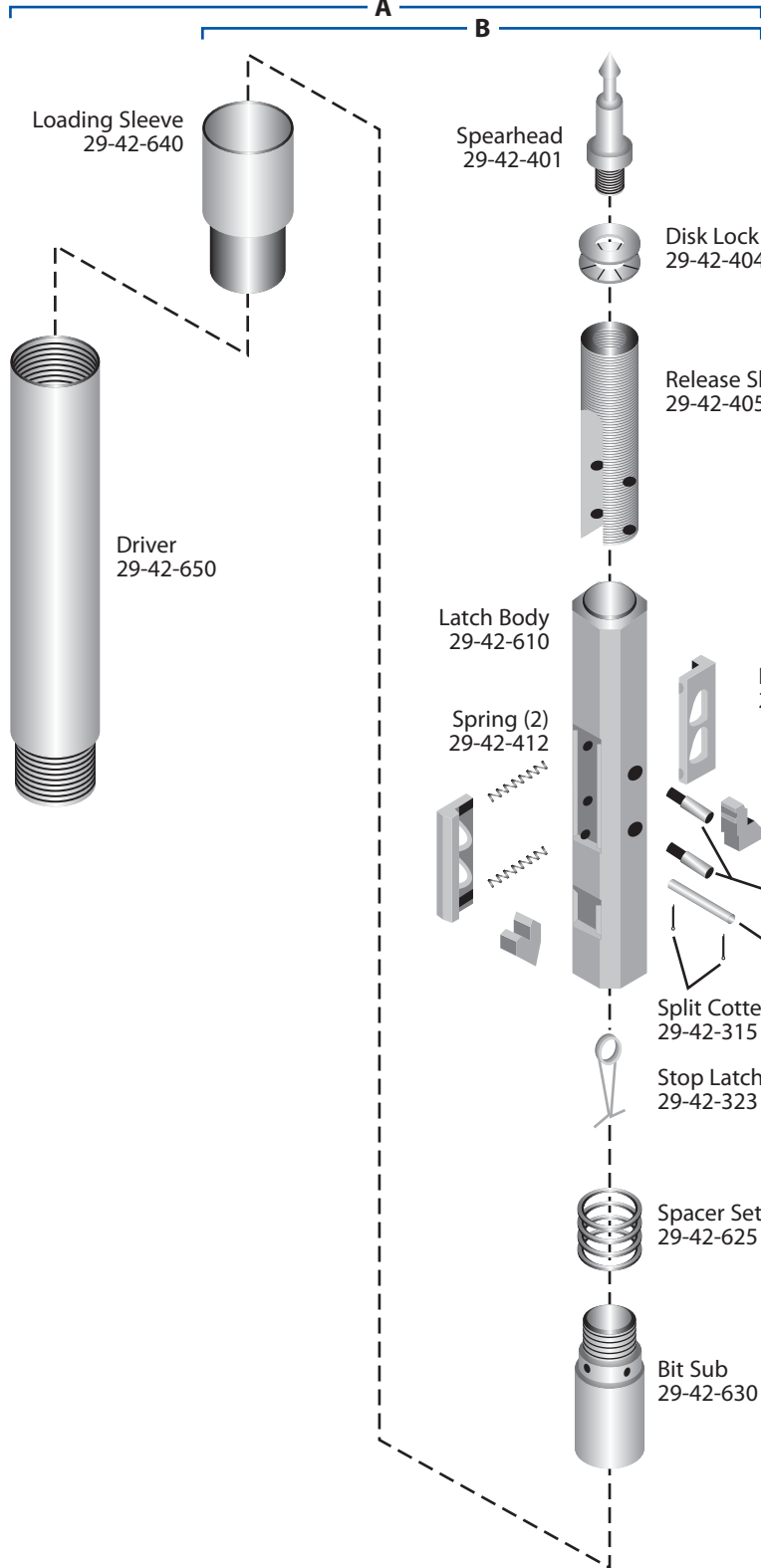


ASSEMBLIES		
Group	Description	Part#
A	Casing Advancer Assy	29-40-505
B	Inner Assy	29-41-505

* Please consult factory for special requirements.



Assemblies

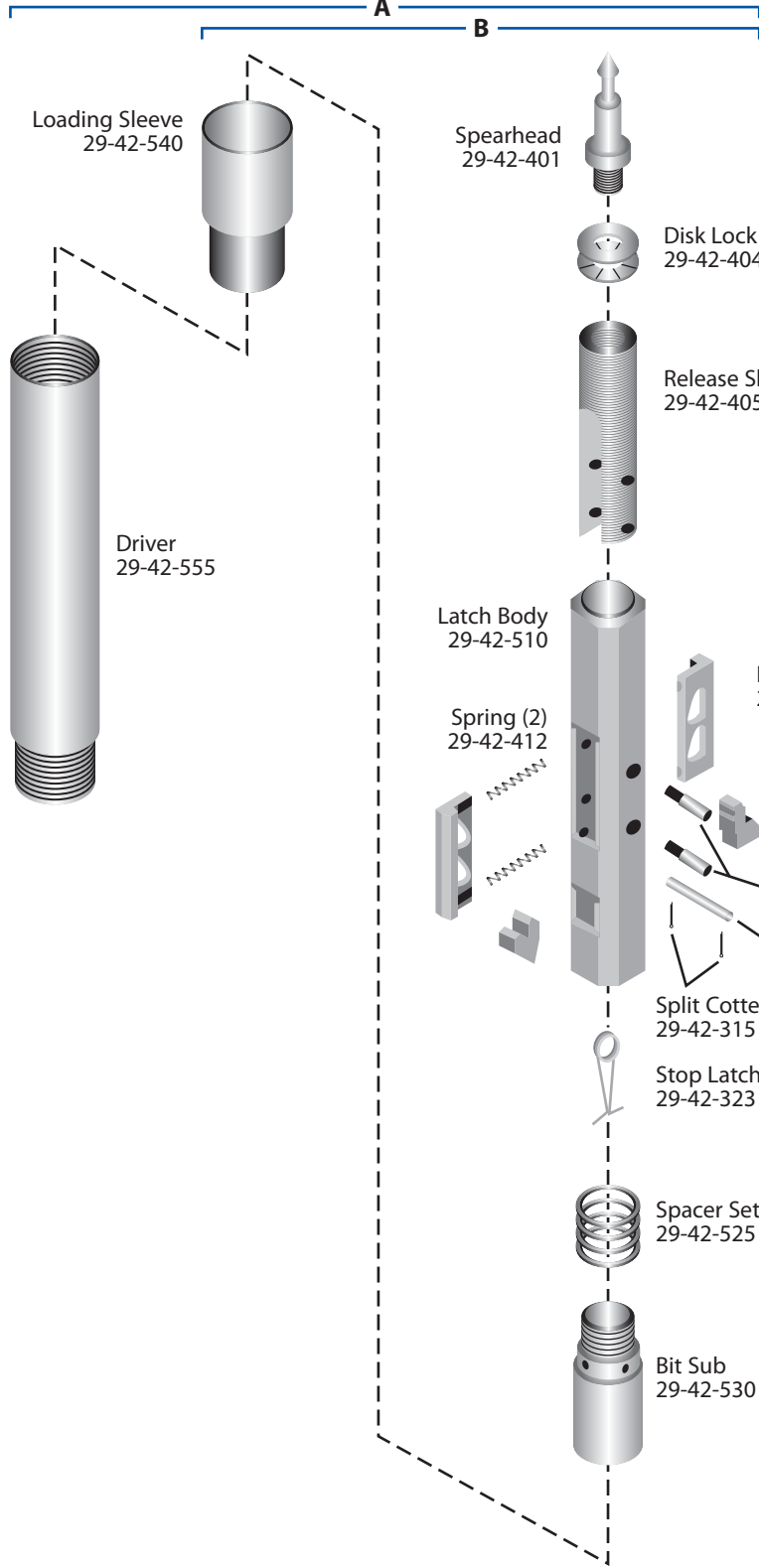


ASSEMBLIES		
Group	Description	Part#
A	Casing Advancer Assy	29-40-605
B	Inner Assy	29-41-605

* Please consult factory for special requirements.



Assemblies

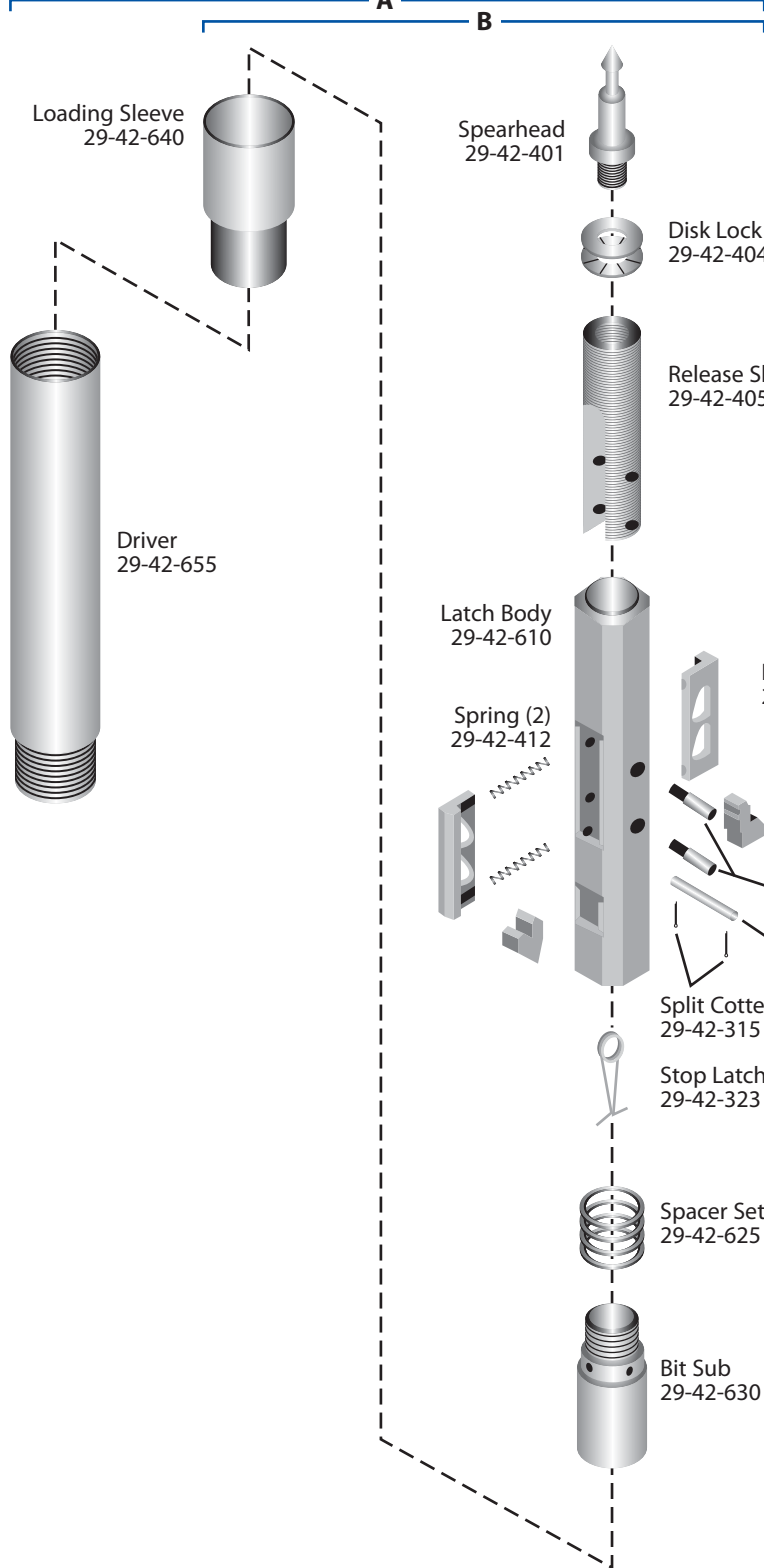


ASSEMBLIES		
Group	Description	Part#
A	Casing Advancer Assy	29-40-510
B	Inner Assy	29-41-505

* Please consult factory for special requirements.



Assemblies



ASSEMBLIES		
Group	Description	Part#
A	Casing Advancer Assy	29-40-610
B	Inner Assy	29-41-605

* Please consult factory for special requirements.

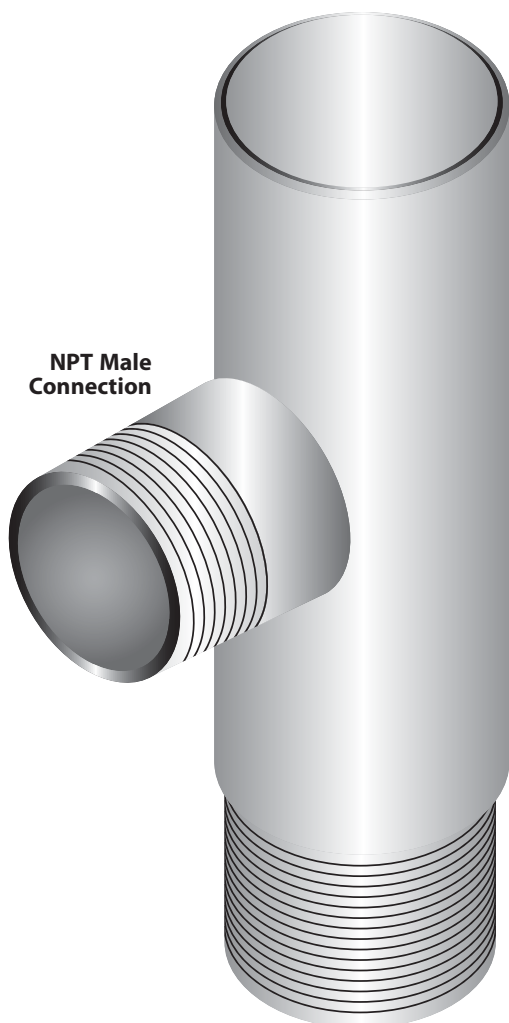


CASING WASH TEES

Description	Part#	Weight (Lb)
AW	18-AW-WSHT	6.1
BW	18-BW-WSHT	11.8
BWT	18-BWT-WSHT	11.8
NW	18-NW-WSHT	14.0
NWT	18-NWT-WSHT	14.0
HW	18-HW-WSHT	19.1
HWT	18-HWT-WSHT	19.1
PW	18-PW-WSHT	23.0
PWT	18-PWT-WSHT </td <td>23.0</td>	23.0
SW	18-SW-WSHT	31.6
SWT	18-SWT-WSHT	31.6

** Also available with L.H. threading.*

** Please consult factory for special requirements.*



NPT Male Connection

WIRELINE WASH TEES

Description	Part#	Weight (Lb)
AWL	18-AWL-WSHT	6.1
BWL	18-BWL-WSHT	7.5
NWL	18-NWL-WSHT	9.2
HWL	18-HWL-WSHT	13.0
PHD	18-PHD-WSHT	19.2
ATW	18-ATW-WSHT	5.1
BTW	18-BTW-WSHT	6.5
NTW	18-NTW-WSHT	8.9
HTW	18-HTW-WSHT	12.6

** Also available with L.H. threading.*

** Please consult factory for special requirements.*



Cap Screw &
Lock Washer



Cap

Jaw (2)

Body

<u>ASSEMBLIES</u>			
Casing	Description	Part#	Weight (Lb)
NW	Retriever Assy	41-10-460	23.0
HW	Retriever Assy	41-10-560	33.0
PW	Retriever Assy	41-10-660	38.0
<u>REPLACEMENT JAWS</u>			
NW	Set of Jaws	41-10-465	2.0
HW	Set of Jaws	41-10-565	3.5
PW	Set of Jaws	41-10-665	4.5

** Please consult factory for special requirements.*



W FLUSH JOINT CASING							
Size	O.D.		I.D.		Threads Per Inch	Weight	
	Inches	MM	Inches	MM		Lb / 10 Ft	Kg / 3 M
AW	2.2500	57.1	1.9060	48.4	4.0	37	17
BW	2.7500	69.9	2.3750	60.3	4.0	71	32
NW	3.5000	88.9	3.0000	76.2	4.0	85	39
HW	4.5000	114.3	4.0000	101.6	4.0	118	53
PW	5.5000	139.7	5.0000	127.0	3.0	144	72
SW	6.6250	168.2	6.0000	152.4	3.0	201	90

* Material: 4130

WT FLUSH JOINT CASING							
Size	O.D.		I.D.		Threads Per Inch	Weight	
	Inches	MM	Inches	MM		Lb / 10 Ft	Kg / 3 M
BWT	2.7500	69.9	2.3750	60.3	2.5	71	32
NWT	3.5000	88.9	3.0000	76.2	2.5	85	39
HWT	4.5000	114.3	4.0000	101.6	2.5	118	53
PWT	5.5000	139.7	5.0000	127.0	2.5	144	72
SWT	6.6250	168.2	6.0000	152.4	2.5	201	90

* Material: 4130